



Mappleborough & Winyates
Green Pre-School



Curriculum Intent,
Implement & Impact

Curriculum Intent



Our children are central to everything we do. Our curriculum is flexible, we follow the children's lead and adapt our provision based on their individual interests.

Language Development

We understand the importance of children's communication skills and recognise how they underpin children's holistic development.

Enabling Environments

We provide inviting and inspiring learning environments both indoors and out.

Community Involvement

We actively take part in local initiatives and value our place within our local community.

Seasonal Calendar

Learning and experiences inspired by the natural rhythms of the year.

Assessment

We observe and notice the progress that children make. With a sound knowledge of child development our practitioners can support children to develop and identify children in need of extra support.

Strong Ethos

We have a strong and intergrated pre-school ethos.

Learning & Development

We support children's learning and development in the seven areas of learning. We focus on the prime areas; communication and language, personal social and emotional and physical development. We then build on these to support the specific areas of; literacy, maths, understanding the world and expressive arts and design.

Quality Education & Care

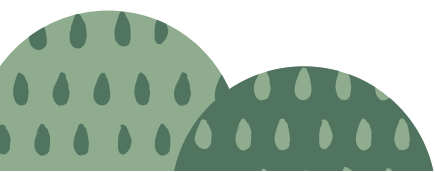
We intend to provide high quality early years education and care for our children. It is inclusive and planned to help all children achieve their full potential. Our pedagogy is inspired by a mixture of teaching approaches.

Pre-School Curriculum

We have an ambitious curriculum designed to help all children make good progress from their starting points. Our curriculum goals set out our aims for every child. The curriculum is flexible and inclusive.

Parent Partnerships

Key persons build strong relationships with parents and carers, they respond to the needs to their key children and their families. Regular and informative communication between parents and the preschool team keep everyone up to date.



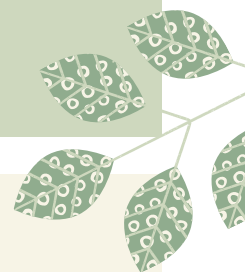
Our Ethos

Play, Learn & Grow Together

PLAY | Child Led Learning

We believe in a child led approach to early years education where children can play, explore and make their own choices. We recognise that all children are unique and at pre-school we celebrate and nurture each child's individual interests and curiosities. Every day gives children endless opportunities to lead their own learning and develop new skills. Our team supports each child's learning by responding in the moment, they extend their thinking and vocabulary as well as introducing new experiences or areas of investigation.

Play is vital to children's learning and development, it is through open ended play that children have the freedom to challenge themselves, problem solve and make connections. Our indoor and outdoor play spaces are carefully planned to ensure that all children can access the resources they need to bring their ideas to life and expand their knowledge and understanding.



LEARN | Learning in Nature

We believe that spending time outdoors and interacting with the natural world enables children to develop a life long love of nature. Children are encouraged to learn about and engage with the natural world, these experiences inspire their curiosity and provoke their thinking.

Being outdoors regularly enables our children to move freely, run, climb and balance. They develop their gross and fine motor skills, strength, co-ordination and learn to manage their own risks. Our outdoor play spaces provide a wide range of open ended resources that facilitate the children's learning in their own way.



GROW | Happy & Healthy

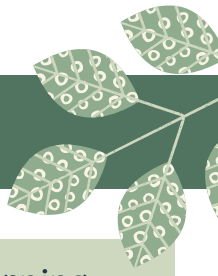
Supporting children's emotional well being is central to what we do. We want our children to be confident and inspired learners, who are proud of their achievements and can recognise their individuality. Children are supported to express and understand their emotions and those of others, this helps them to develop strong relationships, form and maintain friendships with their peers. Our children are resilient and learn how to work through challenges when they occur.

At pre-school, children are encouraged to be active and understand how to make healthy choices. They take part in weekly health and wellbeing sessions including yoga, music and movement and sports. We aim to support our little learners to lead happy and healthy lives.

TOGETHER | Strong Relationships

We strive to create an inviting pre-school environment where parents and carers work in partnership with the pre-school team to support the learning and development of each individual child. We aim involve families and other members of the community to be involved with pre-school, welcoming their contributions and valuing their ideas and skills. We work hard to keep parents informed throughout their child's time with us via regular parent/teacher conversations and termly meetings.

Every child at pre-school is allocated a member of the team to be their key person, this system helps children to form strong relationships and secure attachments with our teachers. We believe children make the best progress when they feel safe and secure and are our team are passionate about developing confident, independent and inspired learners. Children are encouraged to work co-operatively with their peers, learning to collaborate, share ideas and support each other.



Learning & Development

We support children's learning across the 7 areas. We prioritise learning in the 3 prime areas, followed by the specific areas.

Prime areas:

- Communication & Language
- PSED
- Physical

Specific areas:

- Literacy
- Mathematics
- Understanding the World
- Expressive Arts & Design

We use the Development Matters guidance to support our practice.

Children's learning is recorded in their Learning Journals (Tapestry) and shared with their families.

Practitioners respond to children's learning in the moment.

Children have next steps planned by their key person, these are shared with the team and their parents to help them make progress in all areas.

Play Based Learning

Open ended play opportunities encourage children to lead their own learning and facilitates the Characteristics of Effective Learning. These are:

- playing and exploring
- active learning
- creating and thinking critically

Accessible resources encourage and support children's independence and autonomy within the pre-school environment.

Uninterrupted play allows children time to explore, practise and develop skills and solidify learning.

Consistent daily routines help children to feel secure and helps them develop and understand key skills such as hygiene practices, responsibility, tidying up, confidence and independence.

Carefully planned continuous provision encourages all children to be motivated to play, learn and explore.

Enhancements to provision extend children's thinking, provide new experiences and provide challenges to work through.

Adult Guided Learning

We have three pre-school learning groups - hedgehogs, squirrels and owls. The children have 'group time' at the end of each session, lead by a member of the team. They are allocated into these groups based on the stage of their development and take part in adult guided activities carefully planned to support their development.

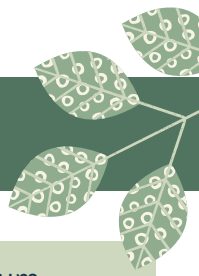
Weekly group activities such as yoga, squiggle while you wiggle, dough disco and sports are planned by staff to support children's learn and develop key skills and encourage them to be active.

Pre-school practitioners skilfully interact with children and respond in the moment to support their next steps. There is a strong focus on early language development.

Practitioners are on hand to support children in their care and learning but also work hard to encourage and foster independence.



Curriculum Implementation



Assessment

Parents complete a 'getting to know you' form when children start to share development and achievements with practitioners.

A few weeks after a child starts, practitioners complete a 'Look What I Can Do!' form to record the children's development in prime areas.

These initial assessments form the children's starting points and help to identify any children in need of additional support quickly. Practitioners suggest next steps for the children.

Key persons complete a summary of children learning and development each term. This is shared with parents who are also encouraged to contribute by sharing learning from home. Next Steps are reviewed and updated each term.

We carry out progress checks at age 2 for all children attending aged between 2-3yrs.



Language & Communication

We understand the importance of children's communication skills and aim to support their development at every opportunity.

We understand language is key to self regulation and use strategies to support children who may not have verbal communication skills.

We use visual prompts, images and objects of reference to support all children to be able to communicate their individual needs and wants.

Practitioners model language by commenting on children's play and repeating and extending what they say.

New words are introduced through modelling, topic links and syllable clapping to help with pronunciation.

Children who need extra support with speech and language development are identified quickly so pre-school and parents can work together to support the child's learning.

We have our own 'Little Listeners' and 'Little Talkers' sessions planned by our SENCOs to support children with speech and language development.

We work collaboratively with SALT and WCF inclusion team to support children make progress.

Pre-School Curriculum

We have an ambitious curriculum, carefully planned to help children develop their skills across the 7 areas of learning.

The curriculum encourages children to learn in nature, with outdoor play an essential part of our pre-school day.

Our curriculum goals set out what we would like our children to achieve during their time with us at pre-school.

Our curriculum helps children develop their cultural capital and aims to help support them to develop the skills they need for later life.

Our curriculum and pedagogy takes inspiration from various teaching approaches including but not limited to; Reggio Emilia, Montessori & Forest School



Curriculum Implementation



Community Involvement

We value our place within our local community and enjoy being involved with local initiatives, such as the planting of the community orchard.

We enjoy regularly visiting local places such as the community allotments, shop, post office and nature reserve.

We recognise and welcome contributions from people within our community. We welcome visits to pre-school to further support children's learning.

We aim to develop the children's awareness of other cultures by exploring and learning about different countries and celebrations.

Parent Partnerships

Regular and accessible communication with parents is key. We communicate via:

- Daily conversations
- Private Facebook group
- Monthly newsletter
- Daily whiteboard
- Tapestry
- Termly parents meetings

Parents invited to be involved with pre-school events throughout the year.

Home learning ideas are shared on newsletters.

Lending library to support communication and literacy development.

Key persons build and maintain strong relationships with parents and families, this is built on trust and enables practitioners to be approachable at all times.

Children's home learning environment is celebrated and valued at pre-school. This is unique to each child and reflects their culture and community.

Feedback from parents is highly valued and helps improve the setting for all.



Planning for Learning

Carefully planned continuous provision and learning environment encourages child initiated learning.

Activities and experiences are inspired by the time of year and linked to a flexible topic/theme. Children's interests are most important and all plans are responsive to current fascinations and curiosities.

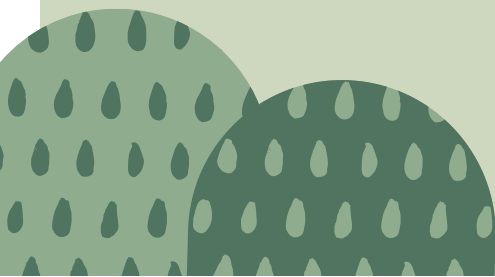


Children's next steps are carefully planned by key persons who support children to work towards them.

Our team to respond and plan for children 'in the moment'

Half termly plans identify enhancements to our continuous provision linked to children's interests and topic/theme.

Practitioners regularly reflect on plans to ensure they are inclusive and relevant to all children.



Curriculum Implementation



Enabling Environments

Our children explore our carefully planned indoor and outdoor play spaces which are designed to support their learning and practise and develop new skills.

Our environment is influenced by the colours in nature, with neutral colours and uncluttered spaces. Displays celebrate children's learning and achievements.

The environment is organised around a familiar layout, this helps our children to self-select the resources they would like or need for their play. It develops their confidence and helps them have responsibility to look after the things around them.

We regularly review our continuous provision to ensure children are engaged, challenged and that there are lots of opportunities to support further learning.



Children's Well-Being & Care

Children are supported during times of transition and helped to feel comfortable and confident with pre-school.

We recognise and celebrate all children's achievements.

We understand that in their pre-school years children develop their self-regulation skills rapidly. We support this by helping them to:

- focus their learning
- monitor and adapt what they are doing
- understand the feeling and work through emotions
- learn to be patient and take turns
- have another go and bounce back after challenges

We work with parents to provide a consistent approach to care practices such as toilet training.

Outdoor Learning

We highly value outdoor learning and the positive impact it has on our children.

Children have access to the outdoor areas of our setting for the majority of the day.

We have a member of our team training to be a Forest School leader and are implementing a Forest School provision within our setting. Here children can experience learning in nature and develop skills. They learn to manage their own risks and about how to care for the world around them.

We regularly take children into the neighbouring Ipsley Alders Nature Reserve for group activities and nature walks.

Regular walks in the local area help children keep active and allow them to experience new things.



Seasonal Calendar

Autumn Term

Festivals & Celebrations

- Diwali
- Bonfire Night
- Hanukkah
- Christmas

Autumn walks in Ipsley Alders Nature Reserve and local area

Winyates Green Scarecrow Festival

Charity Events

- Children in Need
- Christmas Jumper Day

Posting letters to Father Christmas

Photographer

Nativity Play & Carol Concert

Attwell Farm Park
Christmas party and visit to see Father Christmas



Spring Term

Festivals & Celebrations

- Chinese New Year
- Holi
- Easter

RSPB Big Garden Bird Watch

Walks in Ipsley Alders Nature Reserve and local area, looking for Signs of Spring

World Book Day

Easter Egg Hunt

Charity Events

- Comic/Sport Relief

Attwell Farm Park
Farm visit to see Spring on the farm, feed lambs and see new life.



Summer Term

Festivals & Celebrations

- Id ul Fitr

Walks in Ipsley Alders Nature Reserve and local area to see changes throughout the year

School Leavers Trip

School Leavers Celebration
Graduation and Concert



Impact Statement

We Believe That...

- Our curriculum helps children to prepare for the next stage in their education. They make good progress from their starting points and we help them to achieve their potential. Children who attend pre-school develop the skills and knowledge to continue their learning journey in reception and beyond.
- Children develop their skills and knowledge across all seven areas of learning and development and are confident to use these skills in different ways. Children are eager to learn, curious about the world around and confident in their own abilities. They demonstrate high levels of engagement in their learning, developing their speaking and listening skills and communicate to their peers and adults.
- Children develop the personal, social and emotional skills to be kind and respectful to others. They develop compassion, tolerance and understanding of their rights and the rights of others. Children uniqueness is celebrated and they are proud of what they can do.
- Children will develop a wider sense of the world around them, they use these experiences during interactions with others and link this to their learning.
- Children will have developed their individual characteristics of effective learning, they use this to continue their learning, make connections, think of their own ideas and give explanations.
- Children are confident to manage their own risks. They learn from these experiences and understand and value their achievements and are resilient to try again.
- Children at pre-school will leave us with the essential knowledge and skills required for everyday life and continued learning. They are happy, confident, curious and inspires.

